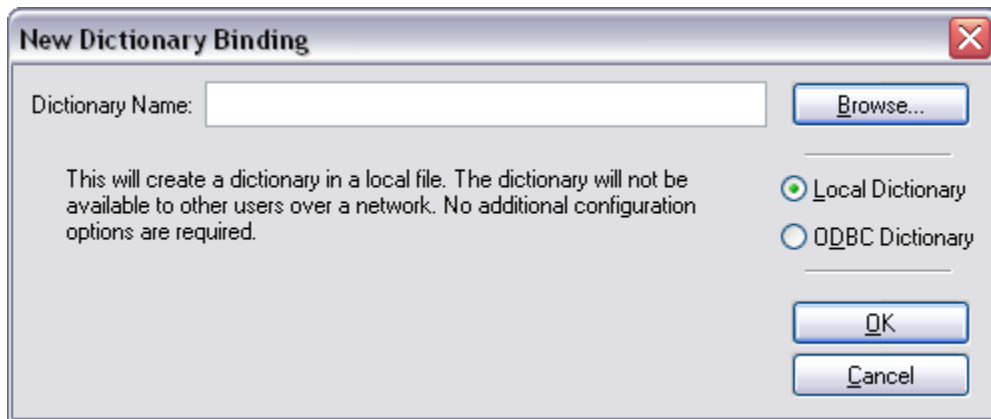
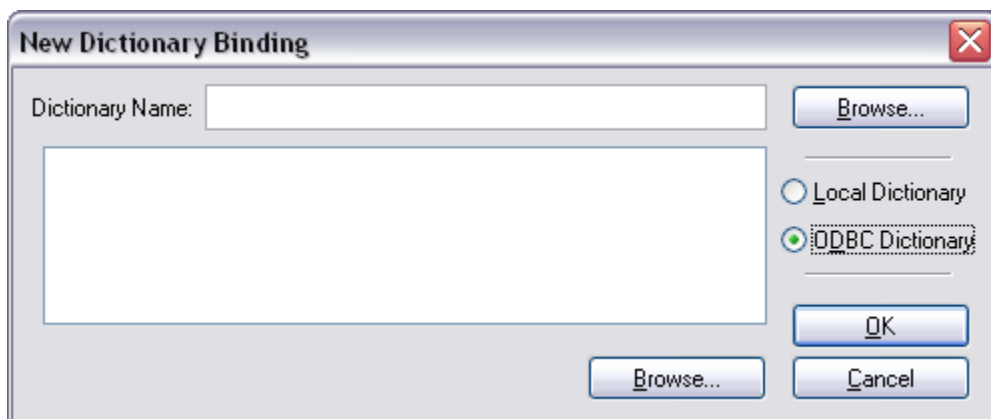


## Windows XP Semantis Revolution ODBC Configuration Instructions

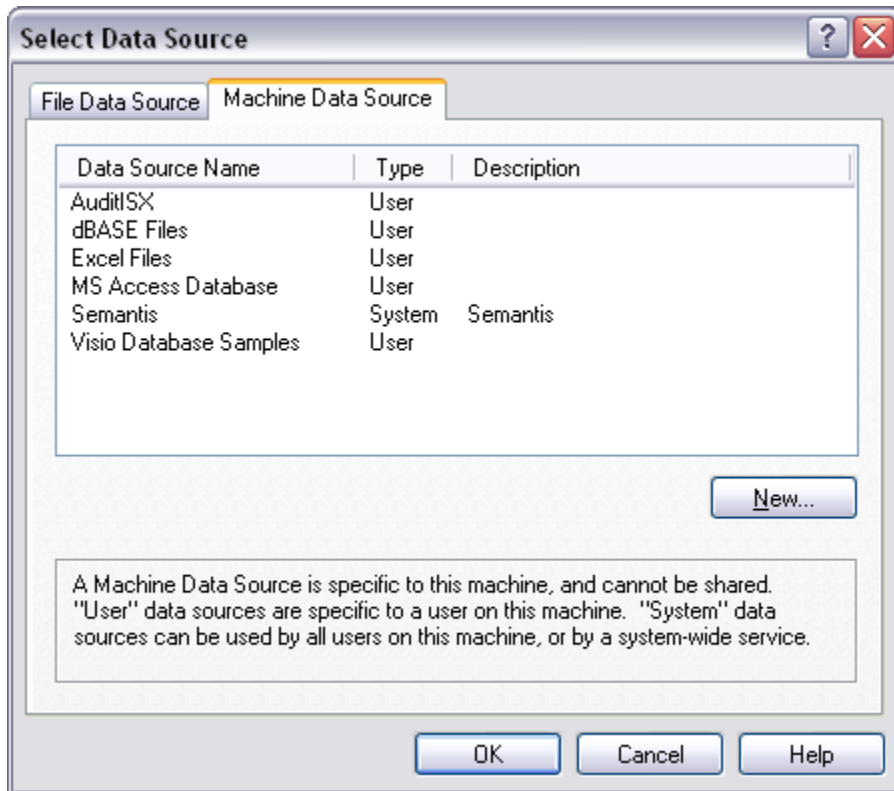
- 1) From within Semantis Revolution, select File . . . Dictionaries . . . New...
- 2) The following screen should then display:



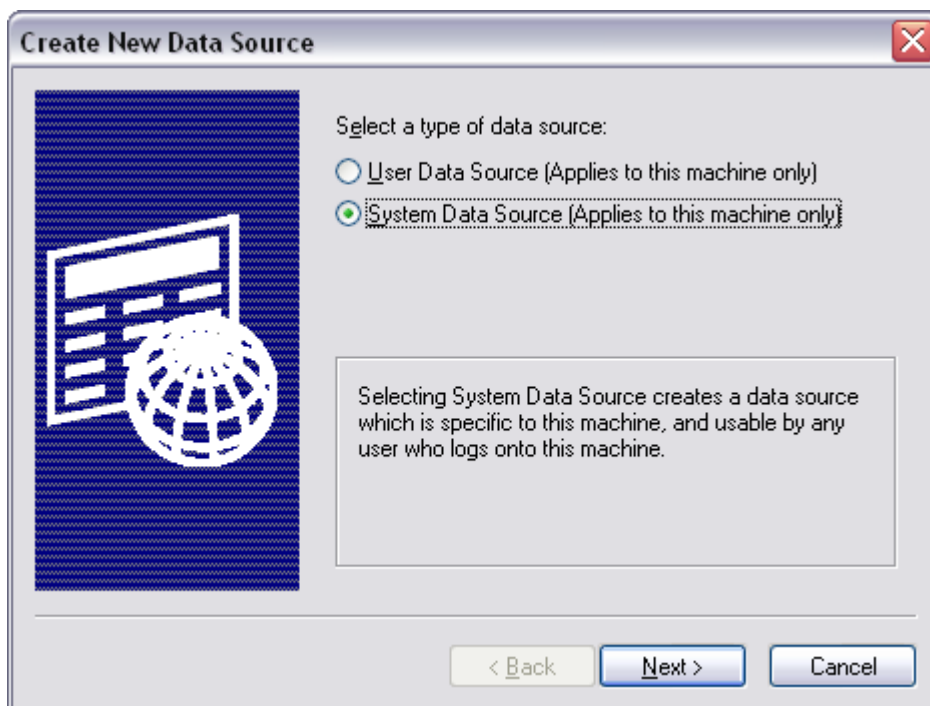
- 3) Select the ODBC Dictionary radio button and the window should change to the following:



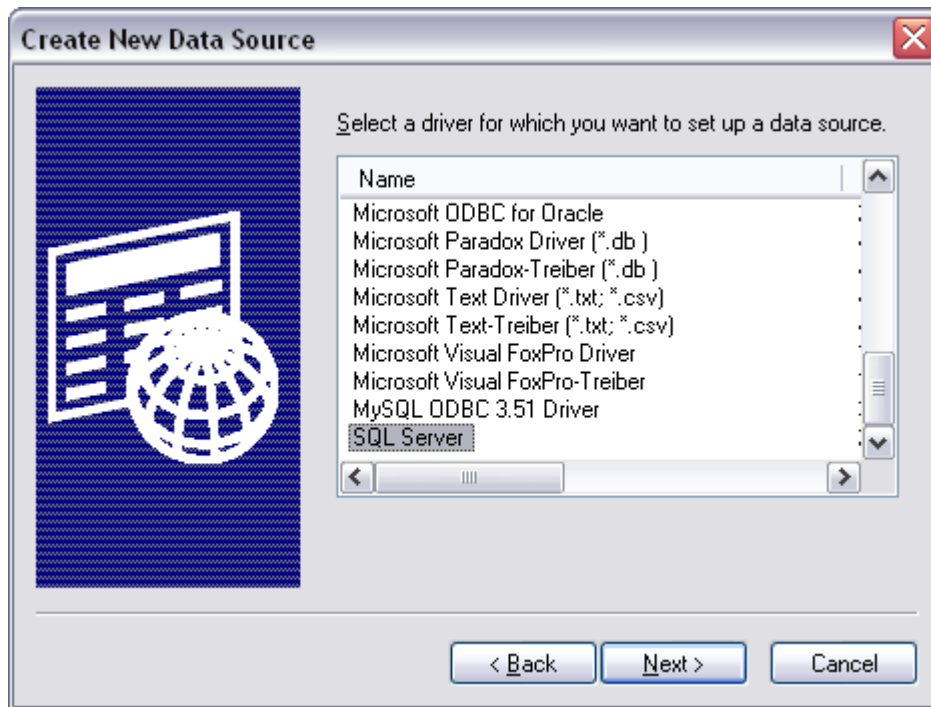
- 4) Select the Browse... button in the bottom of the window
- 5) Select the Machine Data Source tab on the top which should look like this:



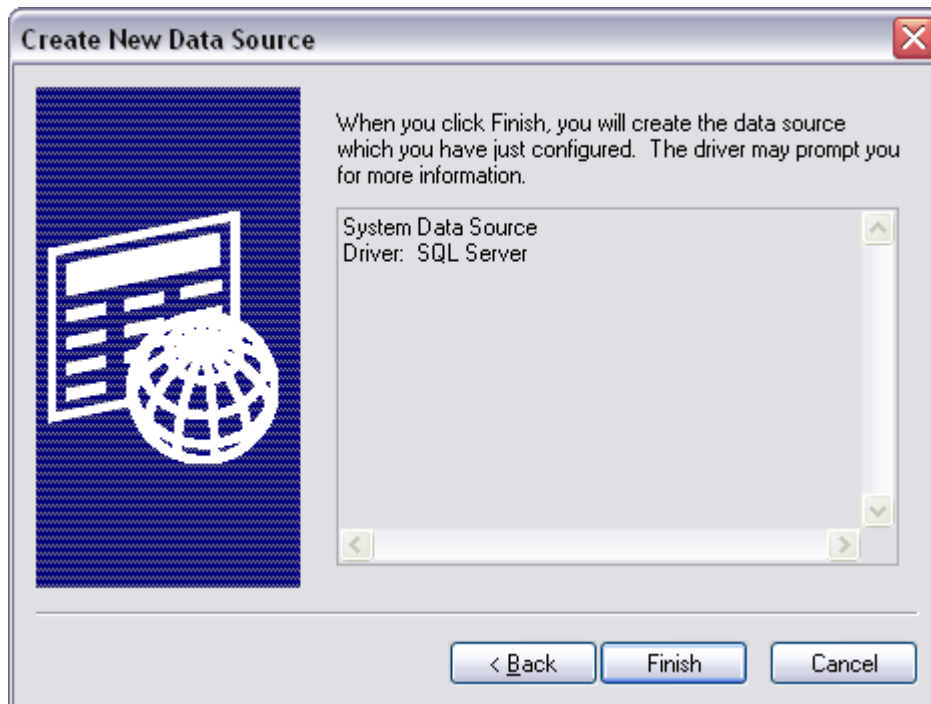
- 6) You likely won't have everything listed like it is in the image above which is fine . . . just make sure that you are on the Machine Data Source tab . . . click the New... button
- 7) A new screen pops up as follows:



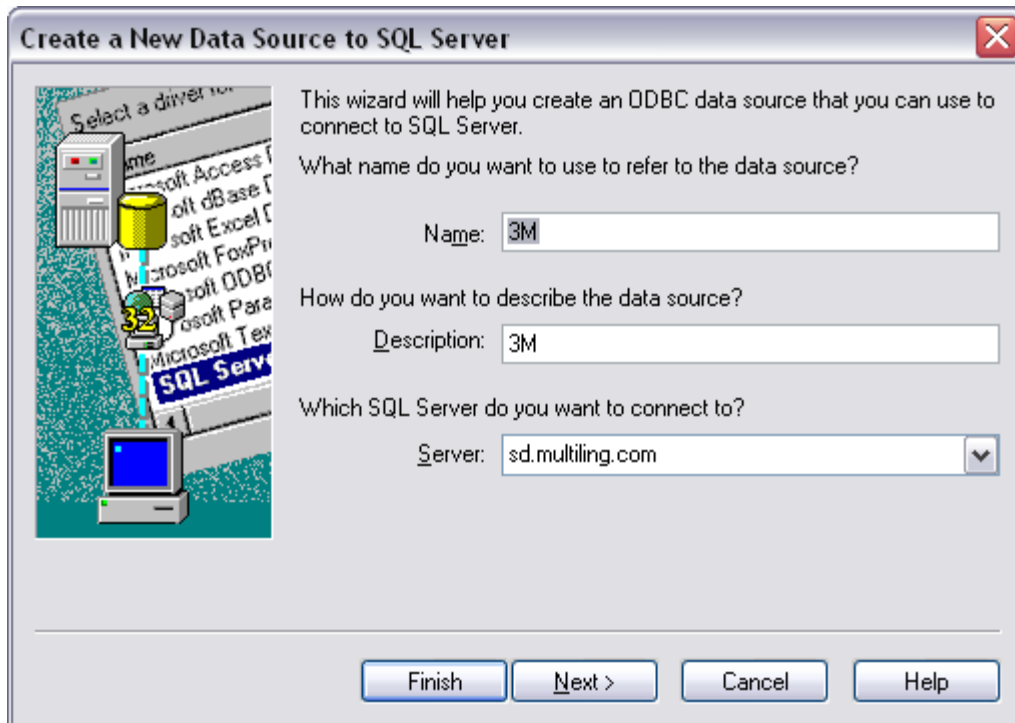
- 8) Make sure that the System Data Source radio button is selected and click Next >
- 9) A whole list of possible database connectors should now appear . . . find the one which says SQL Server (should typically be at the bottom of the list), select it, and click Next >



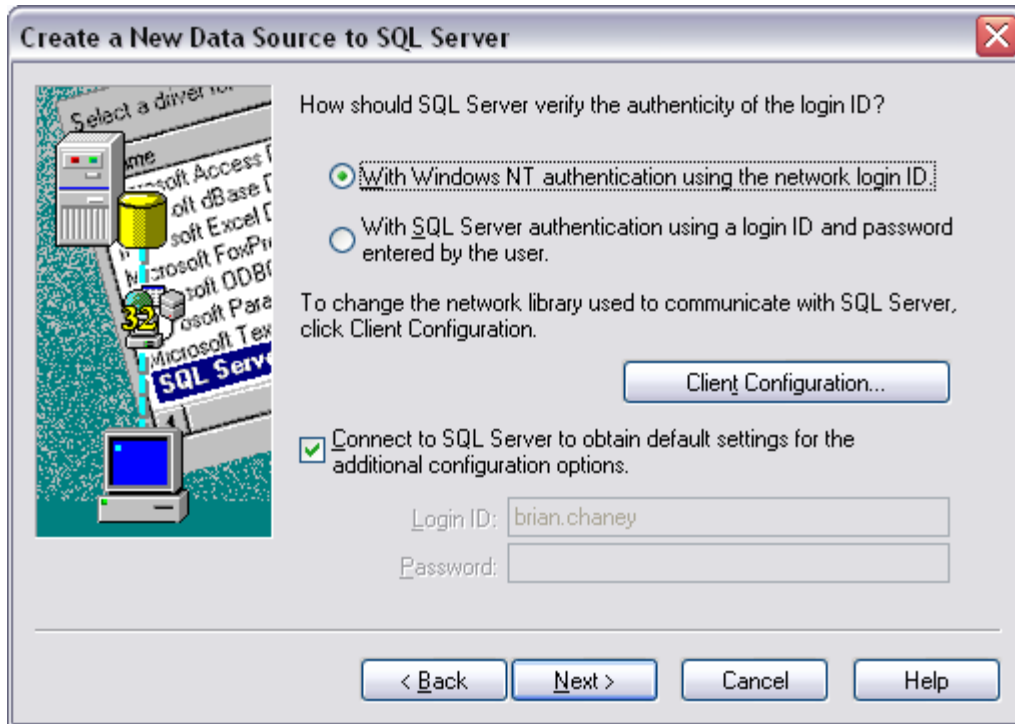
- 10) The confirmation screen below should appear . . . click Finish



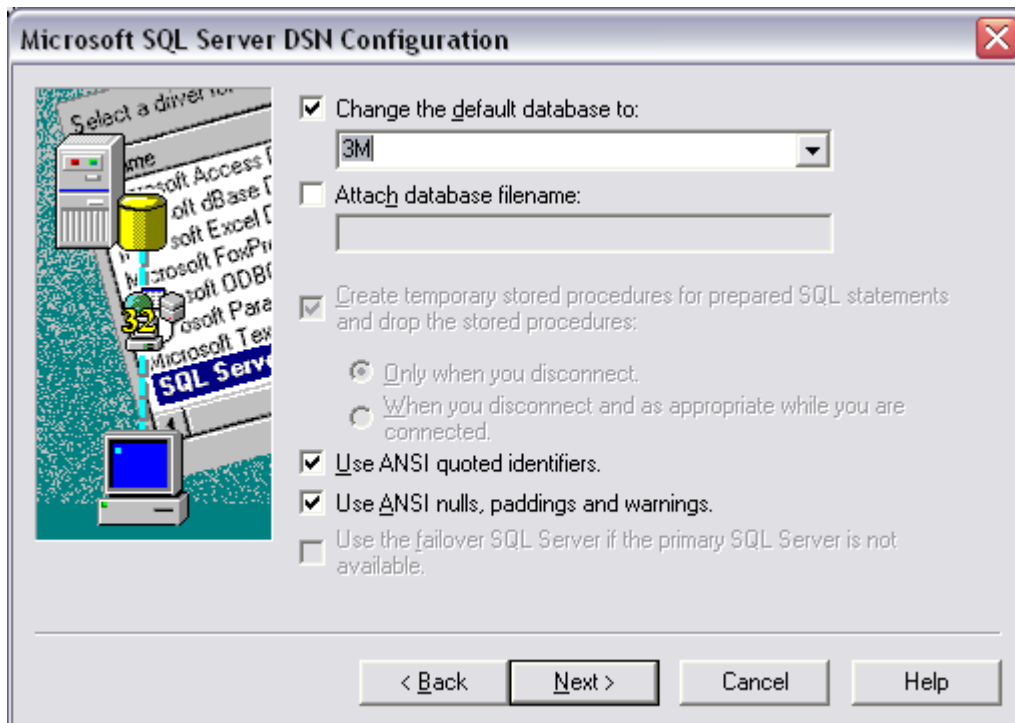
- 11) A new screen should now appear allowing you to set the specifics of the database connection – fill it out according to the client dictionary that you are needing access to (in this case, the connector is for 3M) and click Next > . . . **NOTE: the Server: field will ALWAYS be the same no matter what client you are creating the connector for**



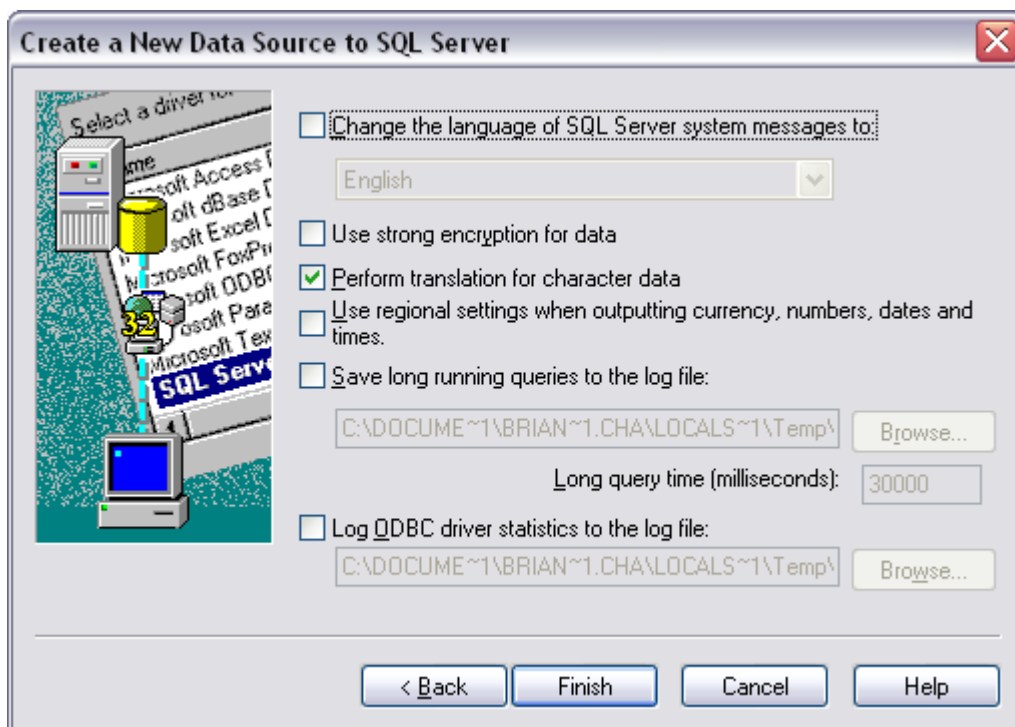
- 12) The next screen asks for authentication type to connect to the database . . . **as long as you are currently logged into your computer using your MultiLing Provo Username and Password**, leave the top radio button checked and click the Next > button.



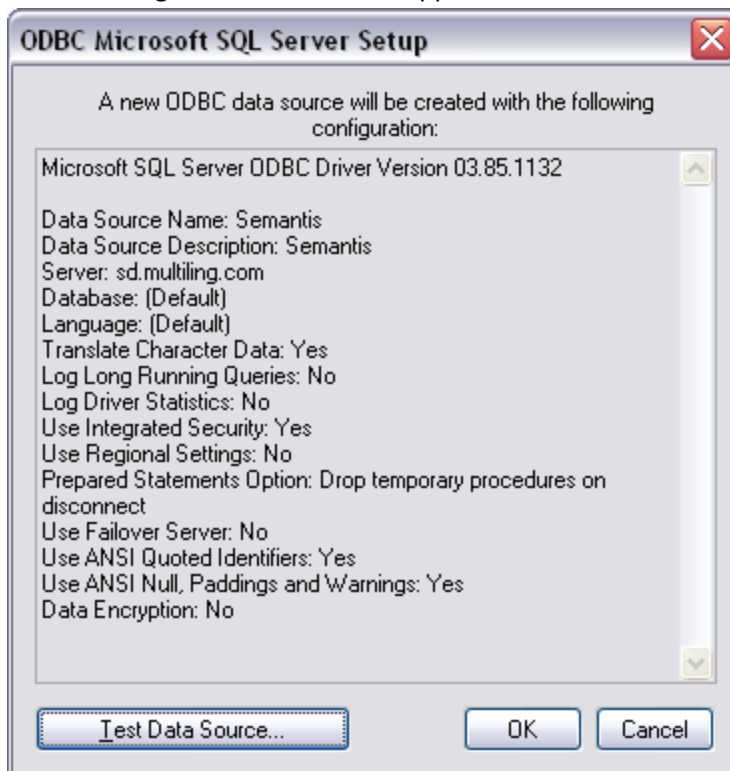
- 13) Depending on the client you are needing access to, you will need to change the default database that you are connected to on the next screen . . . click the Change the default database to: check box and change the database to whichever client database you are setting up the connector for using the drop-down box and click Next >



14) Accept the defaults again and click Finish



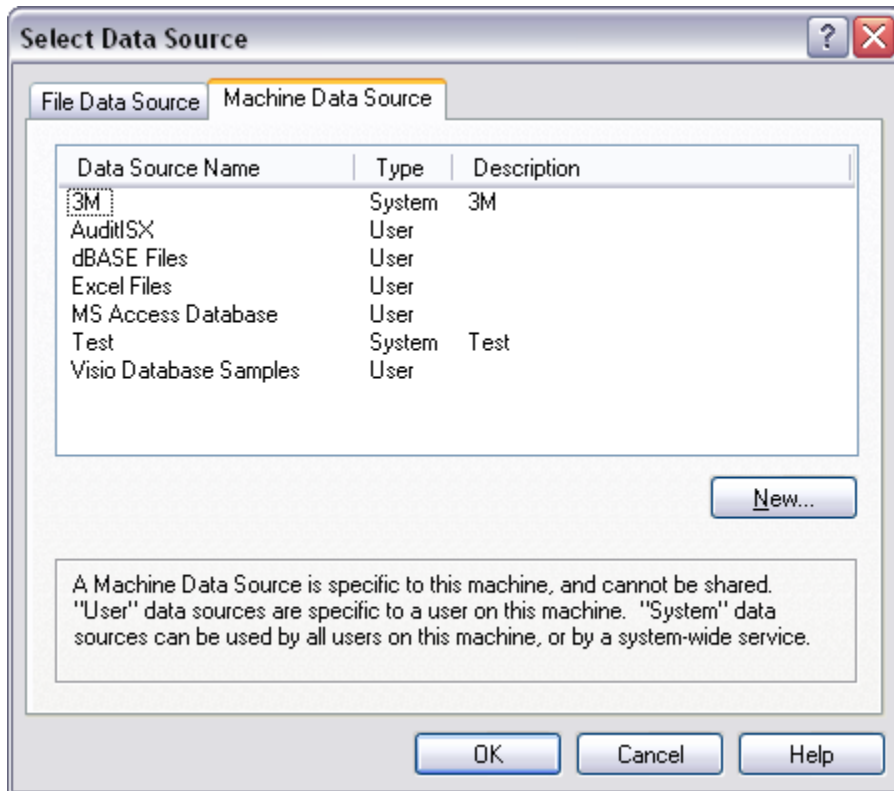
15) The following screen should now appear:



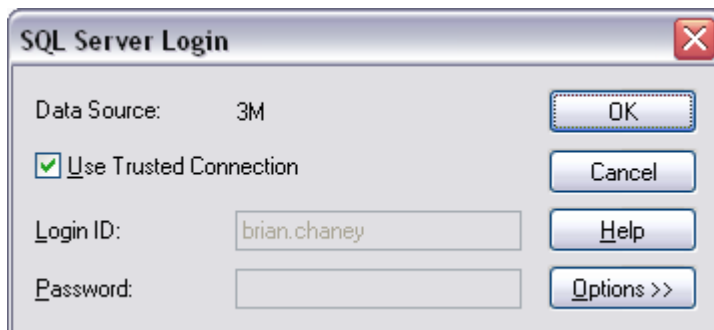
Click the Test Data Source... to confirm that you have access to the Database . . . assuming everything is correct, the following screen should appear:



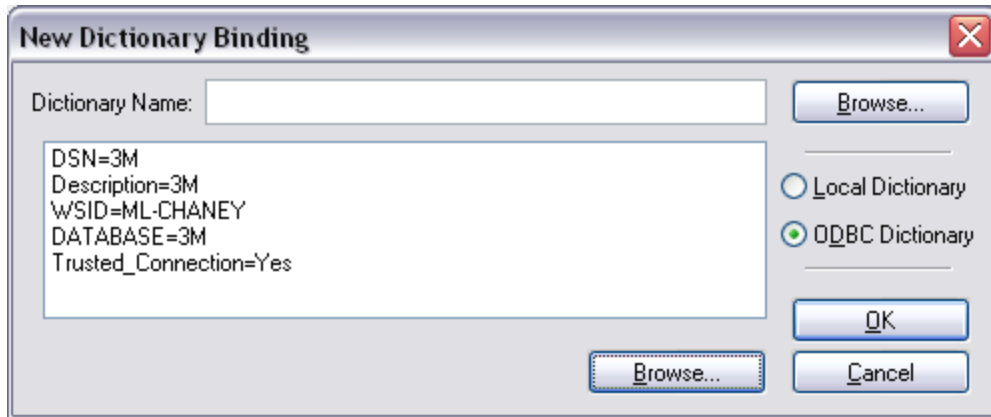
Assuming this is the case, click OK, and then OK again, which should return you to the following screen:



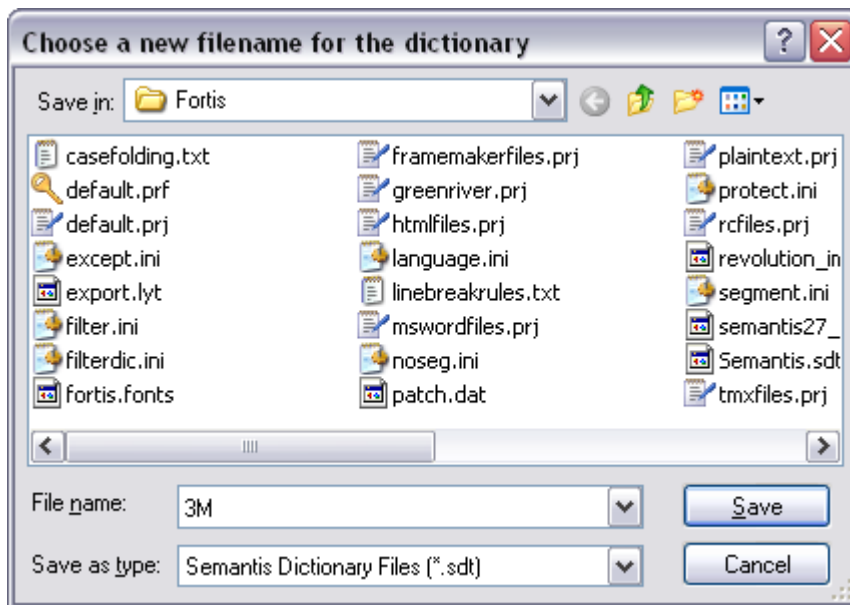
- 16) You should now see the newly created connection appear in the list under the name you gave it (3M) . . . click OK . . . you should now see this screen:



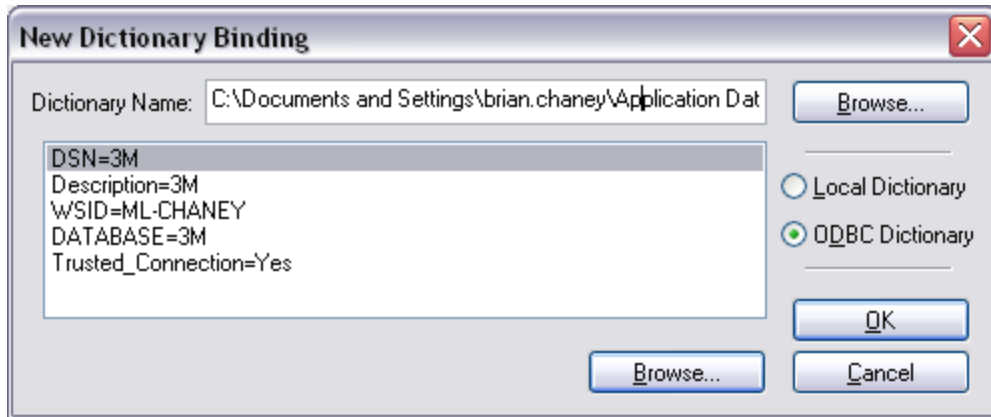
- 17) Because you are using the credentials of your Windows account to login to the database, all you need to do is click OK . . . doing so will show the following screen:



- 18) Now you need to name the Connection and save it . . . click the Browse... button on the top right and the following screen should appear:



- 19) This default location(C:\Documents and Settings\firstname.lastname\Application Data\Multiling\Fortis) is ok to save the database connection into as it will make the Dictionaries easily accessible, or you can browse to your own preferred location . . . type the name of the Database Connector into the File name: field as shown (3M), browse if wanted to the new location, and click Save
- 20) This should return you to the following screen:

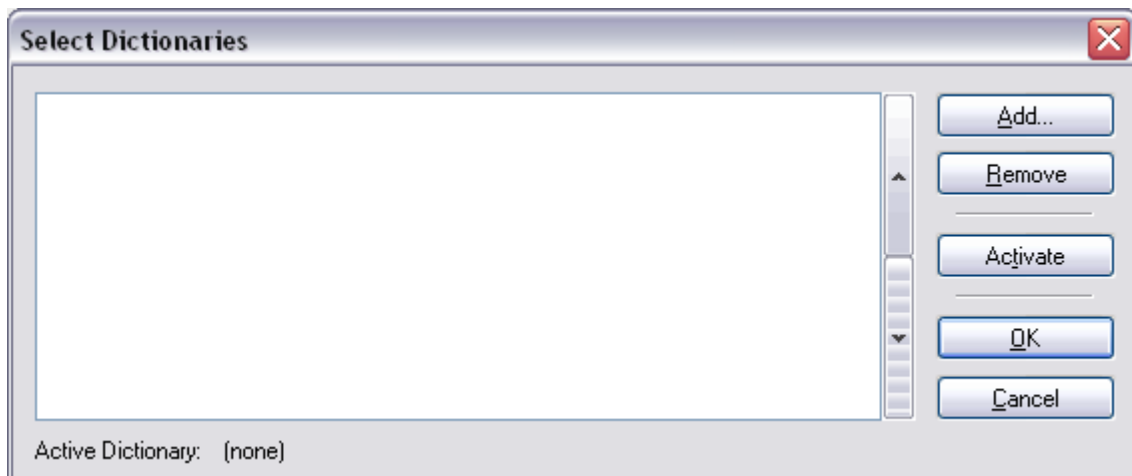


Click the OK button.

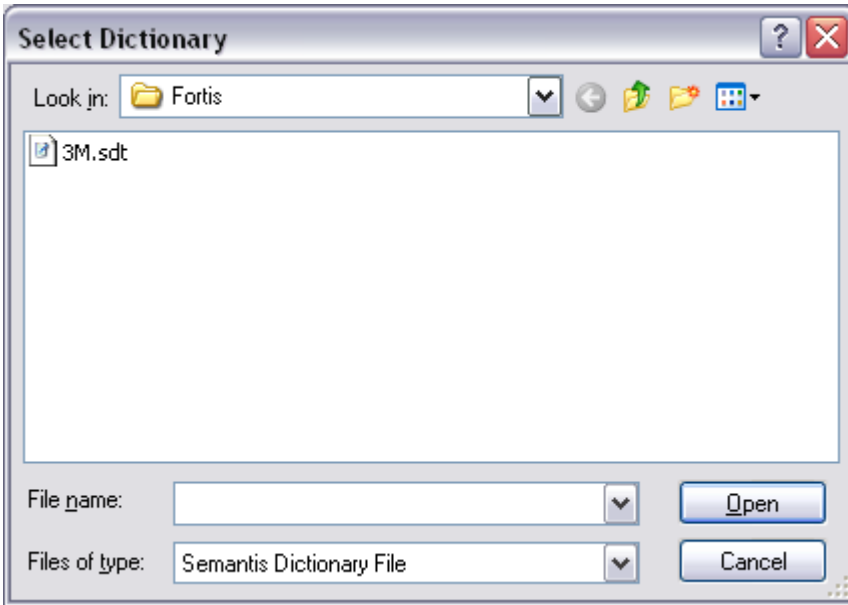
Your Database Driver is now configured and ready for use.

### Adding a Semantis Revolution ODBC Dictionary

- 1) To access the database dictionaries in Semantis Revolution, click File . . . Select Dictionaries... . . . this should bring up the following screen:

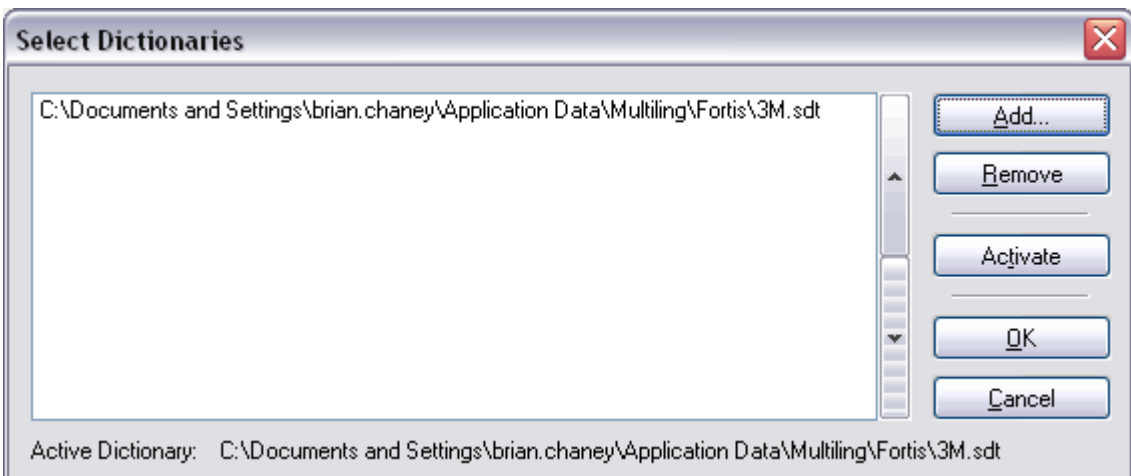


- 2) Click the Add... button . . . when you do so, you should immediately see the Connector File which you saved earlier if you saved it into the default location appear as follows



If the window is blank, this means that you saved the .sdt file in a different location and need to browse to it . . . once you have browsed to the file, click it and click Open

3) The following screen should then appear:



4) Click OK and the selected dictionary should open. If you need access to multiple dictionaries, repeat the Adding a Dictionary process for each Database Connector for the client dictionaries that you need access to